

Workers' Compensation Section

RAWLE & HENDERSON LLP

Workers' Compensation

The **Workers' Compensation Section** at RAWLE & HENDERSON LLP continues to maintain a reputation for excellence while remaining at the forefront of modern workers' compensation litigation. Our attorneys provide representation to insured and self-insured businesses in all matters throughout the states of **Pennsylvania, New York, New Jersey, Delaware, and West Virginia**. Our clients are among the largest insurers in the world, as well as Fortune 500 companies, who require the highest level of representation in workers' compensation matters. Our team is composed of experienced workers' compensation attorneys practicing in **Philadelphia, PA, Harrisburg, PA, Pittsburgh, PA, Marlton, NJ, Wilmington, DE, New York City, NY, Mineola, NY, and Wheeling, WV**.

Our group is organized to maximize efficiency and to reduce costs. New cases are selectively assigned to an experienced attorney who regularly handles matters in a specific jurisdiction. We take pride in fulfilling our role as counselors, providing advice with an aim toward preventing problematic issues from arising and seeking to aid in managing claims in the most cost-effective manner possible. We are acutely aware of the rising costs of workers' compensation, and thus are committed to aggressive and timely case handling. When litigation is undertaken, we are resolute in our purpose, thorough in our preparation and unyielding in our advocacy.

www.rawle.com



The Widener Building
One South Penn Square, 16th Floor
Philadelphia, PA 19107
(215) 575-4200; Fax (215) 563-2583

Henry W. Oliver Building
535 Smithfield Street, Suite 1000
Pittsburgh, PA 15222
(412) 261-5700; Fax (412) 261-5710

240 N. 3rd Street, 9th Floor
Harrisburg, PA 17101
(717) 234-7700; Fax (717) 234-7710

14 Wall Street, 27th Floor
New York, NY 10005
(212) 323-7070; Fax (212) 323-7099

170 Old Country Rd., Suite 215
Mineola, NY 11501
(516) 294-2001; Fax (516) 294-2006

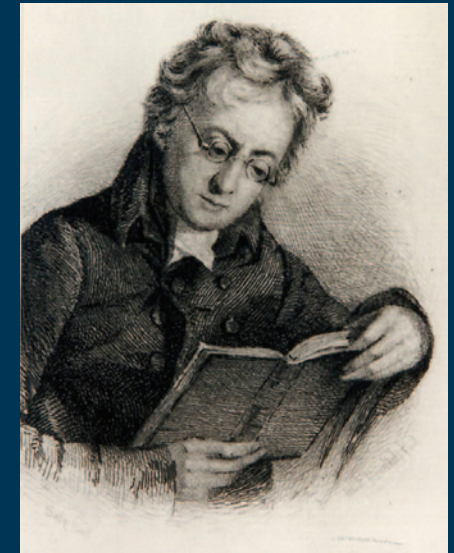
40 Lake Center Exec. Park
Suite 200, 401 Rt. 73 N
Marlton, NJ 08053
(856) 596-4800; Fax (856) 596-6164

300 Delaware Ave., Suite 1120
Wilmington, DE 19801
(302) 778-1200; Fax (302) 778-1400

The Board of Trade Building
80 - 12th Street, Ste. 307
Wheeling, WV 26003-3271
(304) 232-1203; Fax (304) 232-1205

RAWLE & HENDERSON LLP

The Nation's Oldest Law Office
~Established in 1783~



William Rawle, Founder



www.rawle.com



Claudio J. DiPaolo, Chair of Rawle & Henderson LLP's Workers' Compensation Section, has focused his practice in the area of workers' compensation for over 20 years. He has defended workers' compensation claims on behalf of self-insured corporations, insurance carriers, and various political entities.

Mr. DiPaolo began his career with an appointment to the Pennsylvania Department of Labor and Industry as an opinion writer, during which he drafted administrative law decisions involving adjudicated workers' compensation matters. In this capacity, he also assisted in the editing of the treatise, *Pennsylvania Workers' Compensation: Practice and Procedure*. He has given presentations to various groups and clients throughout the country in regard to establishing workplace safety programs, reducing workers' compensation costs, compliance with federal and state employment laws, and effective claims handling.

Mr. DiPaolo studied Art History in Rome, Italy, and Political Science at Duquesne University. He earned his J.D. degree from the Delaware campus of the Widener University School of Law in 1993. He was selected as a Pennsylvania Super Lawyer in 2015, 2016, 2017 and 2018 by *Super Lawyers* and *Law & Politics Magazine*.

For more information,
contact Mr. DiPaolo at: (215) 575-4343
cdipaolo@rawle.com

OFFICES: Philadelphia, New York,
Pittsburgh, Harrisburg

Philadelphia, Pennsylvania



Zach Rubinich has been certified by the Pennsylvania Bar Association Workers' Compensation Law Section as a Specialist in the practice of workers' compensation law. He is rated AV Preeminent by Martindale-Hubbell and has been selected as a Pennsylvania Rising Star by Super Lawyers. (Additional Offices: Harrisburg, PA, Pittsburgh, PA)



Kathlyn C. Gorman has extensive experience in workers' compensation litigation. She received her J.D. from Widener University and her B.A. from the University of New Hampshire. Ms. Gorman is admitted to practice in Pennsylvania, New York, Connecticut and North Carolina, as well as the U.S. District Court, Eastern District of North Carolina. She has been rated AV Preeminent by Martindale-Hubbell. (Additional Office: New York, NY)

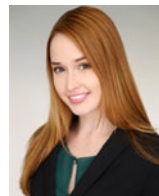


Erica M. Wicas focuses her practice on workers' compensation law. She received her J.D. from Rutgers School of Law in 2013 and her B.A. from the University of Pennsylvania in 2010. She is admitted to practice in Pennsylvania and New Jersey. (Additional Office: Harrisburg, PA)

Marlton, New Jersey



Jennifer Lynn Frechie concentrates her practice on workers' compensation law. She earned her J.D. from Temple University Beasley School of Law in 2013 and her B.A. from Penn State University in 2010. She is admitted to practice in Pennsylvania and New Jersey, as well as the Supreme Court of Pennsylvania, the U.S. District Courts for the Eastern and Middle Districts of Pennsylvania, the Supreme Court of New Jersey, and the Federal District of New Jersey. (Additional Office: Phila., PA)



Corrine E. Williams concentrates her practice in the area of workers' compensation litigation. She earned her J.D. from Temple University Beasley School of Law in 2016. Corrine earned a B.S. in Political Science and a B.A. in English Literature, *magna cum laude*, from the University of Pittsburgh in 2013. She is admitted to practice in Pennsylvania and New Jersey. (Additional Office: Phila., PA)

Pittsburgh, Pennsylvania



Christian M. Stein, Counsel to the firm in the Pittsburgh office, has focused his practice on all facets of Pennsylvania workers' compensation law for over 10 years. He is admitted to practice in the state courts of Pennsylvania and is a member of the Bar of the U.S. Supreme Court. (Additional Office: Wheeling, WV)

Wilmington, Delaware



Delia A. Clark focuses her practice on workers' compensation litigation. She earned her J.D. from the Widener University School of Law and her B.A. from Ohio State University. She is admitted to practice in Delaware, New Jersey, Pennsylvania and the District of Columbia, as well as the U.S. District Courts for the Eastern and Middle Districts of Pennsylvania, the District of New Jersey, the District of Delaware, the District of Columbia, and the U. S. Court of Appeals for the Third Circuit. (Additional Office: Marlton, NJ)

New York City, New York



Richard B. Polner concentrates his practice in the area of workers' compensation. Mr. Polner received his J.D. from Brooklyn Law School in 1998 and his B.A. from Binghamton University in 1991. He is admitted to practice before the Courts of the State of New York and the U.S. District Courts for the Southern and Eastern Districts of New York.



Mary Bergmann represents employers and insurance companies in all aspects of workers' compensation litigation. She earned her J.D. from Brooklyn Law School in 1985 and her B.A. from Fordham University in 1981. She is admitted to practice in New York, as well as the U.S. District Courts for the Southern and Eastern Districts of New York. (Additional Office: Mineola, NY)

www.rawle.com